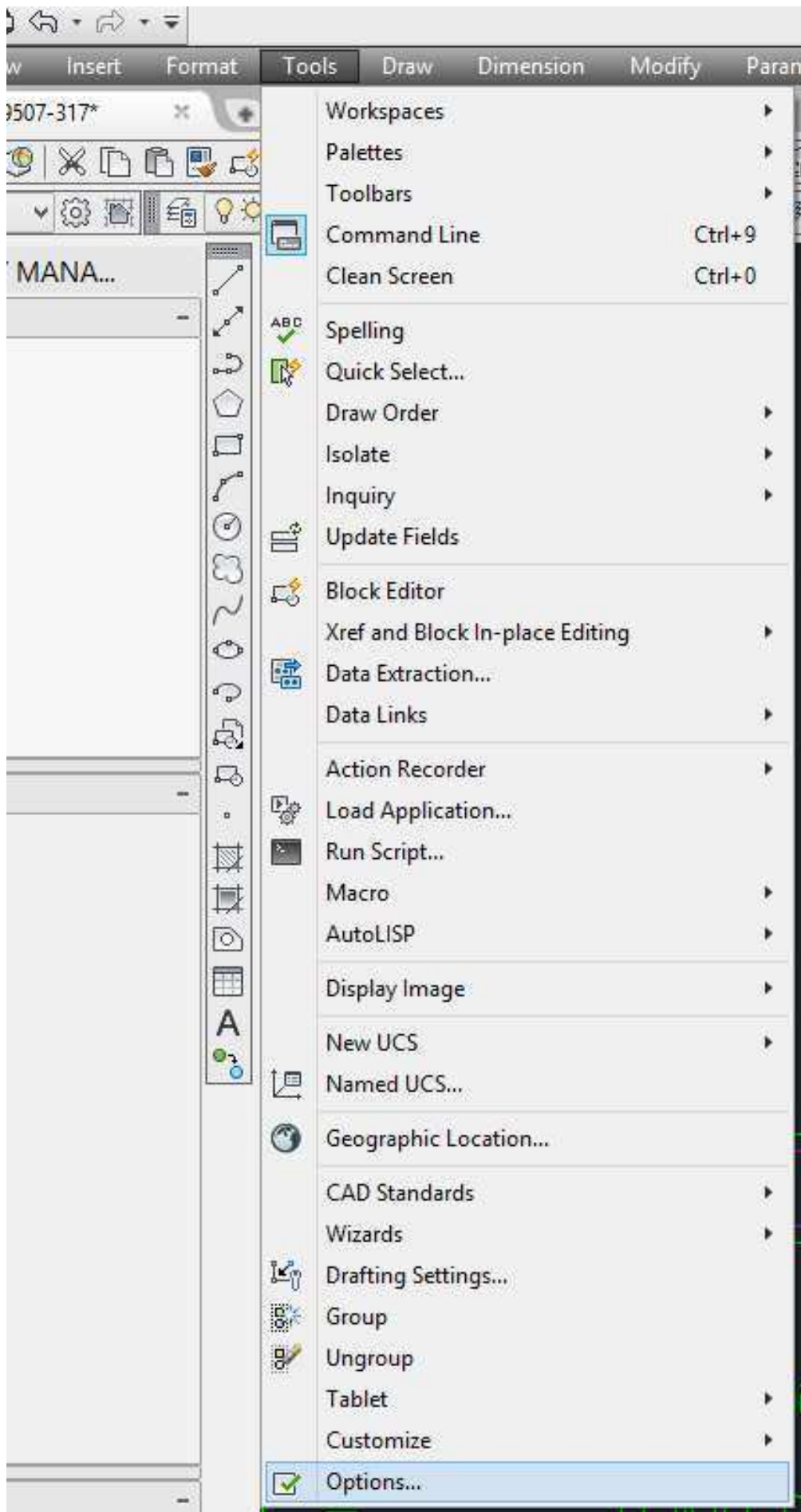
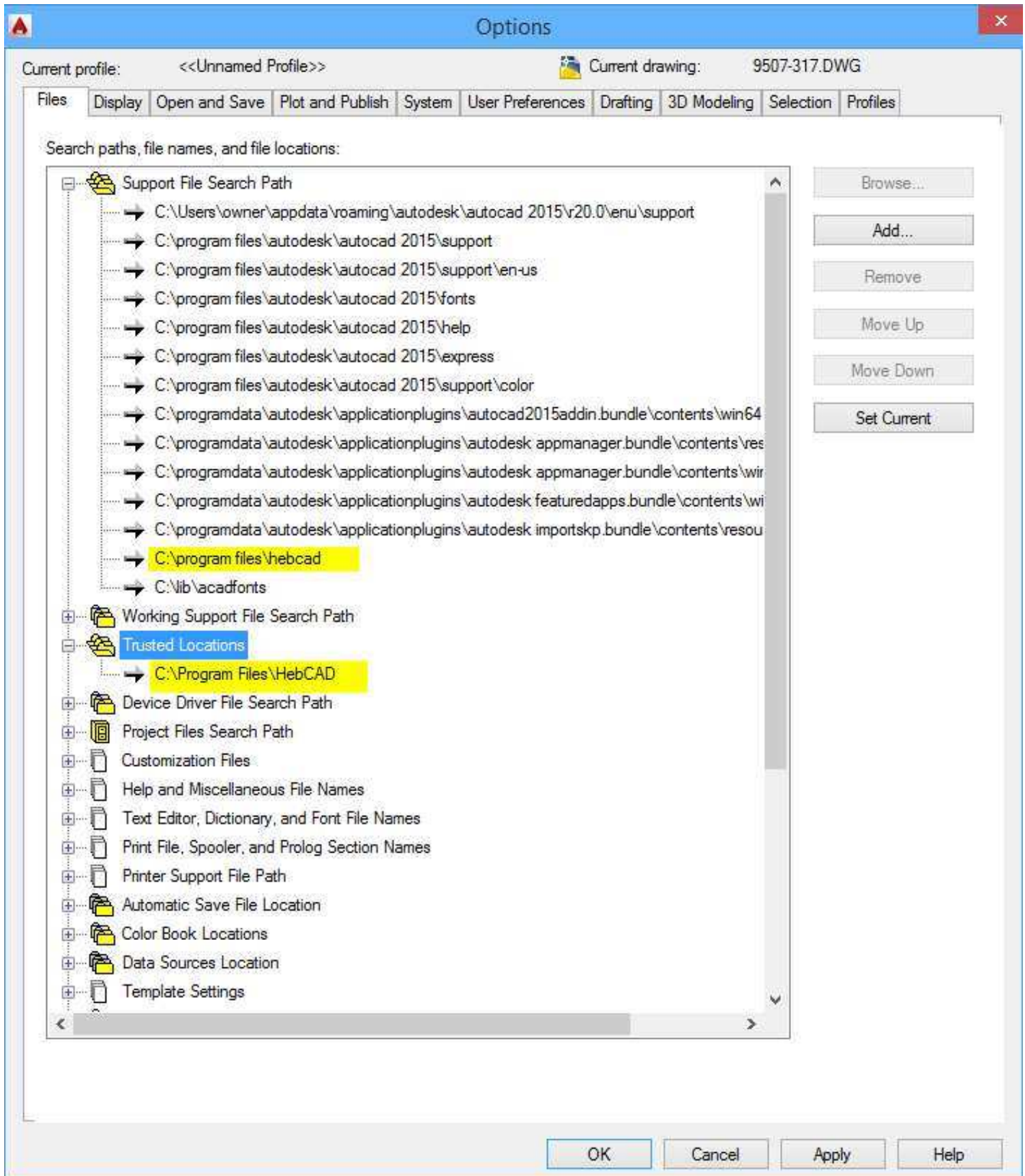


Download Hebcad64Setup.exe, Run it as Administrator

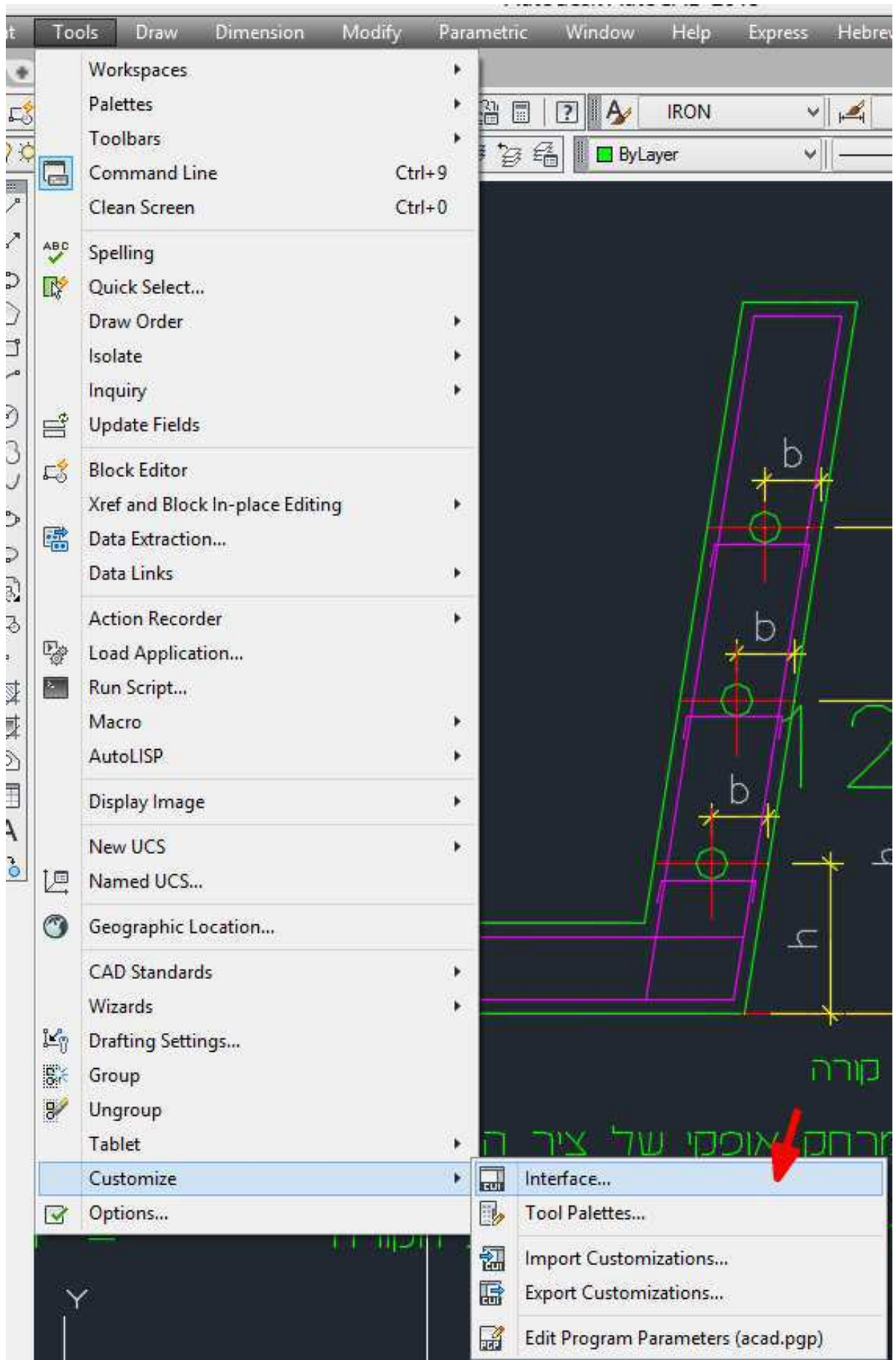


Open autoCAD, select Tools->Options menu

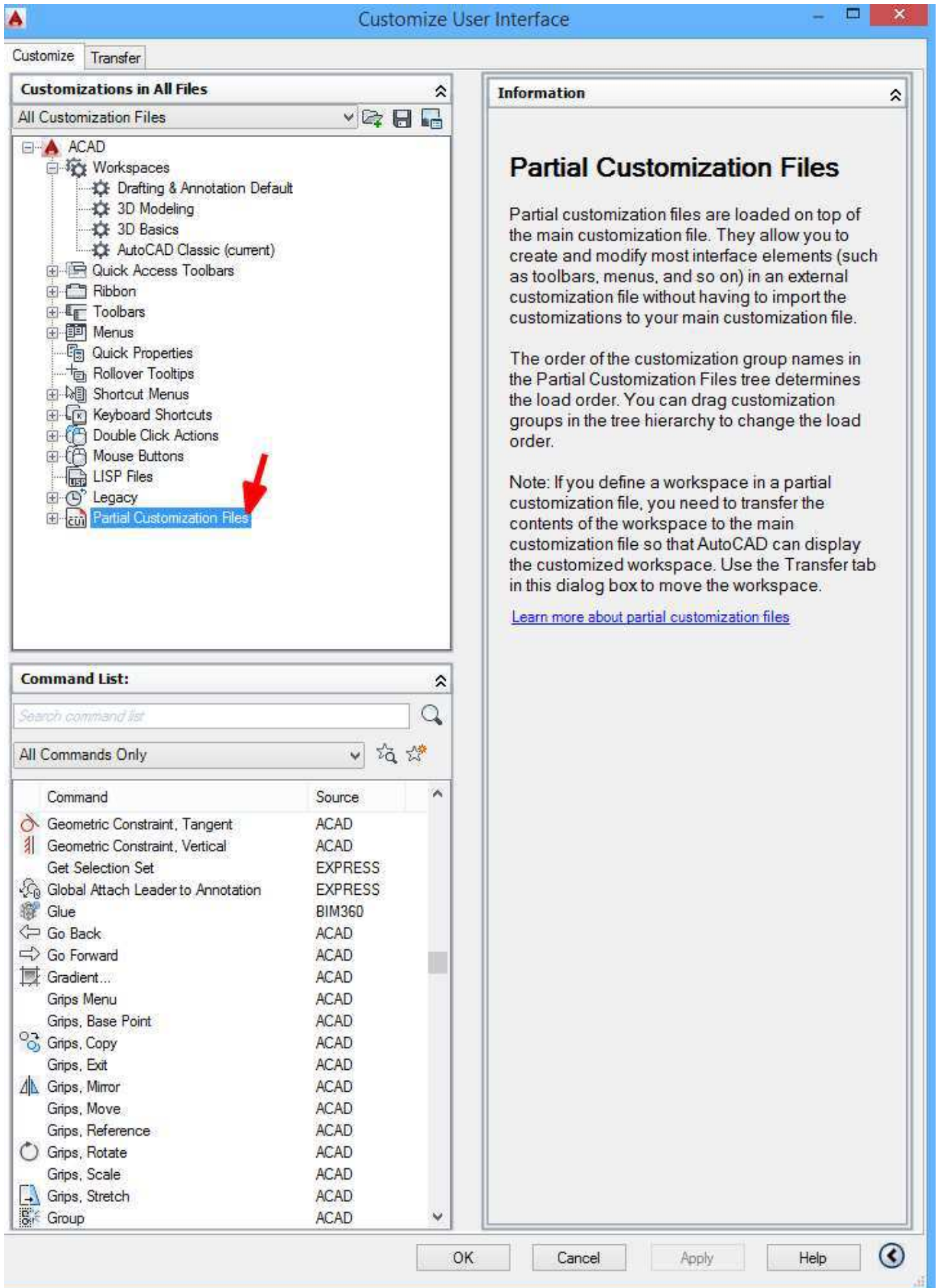


Add IHebcad folder to Search and Trusted paths

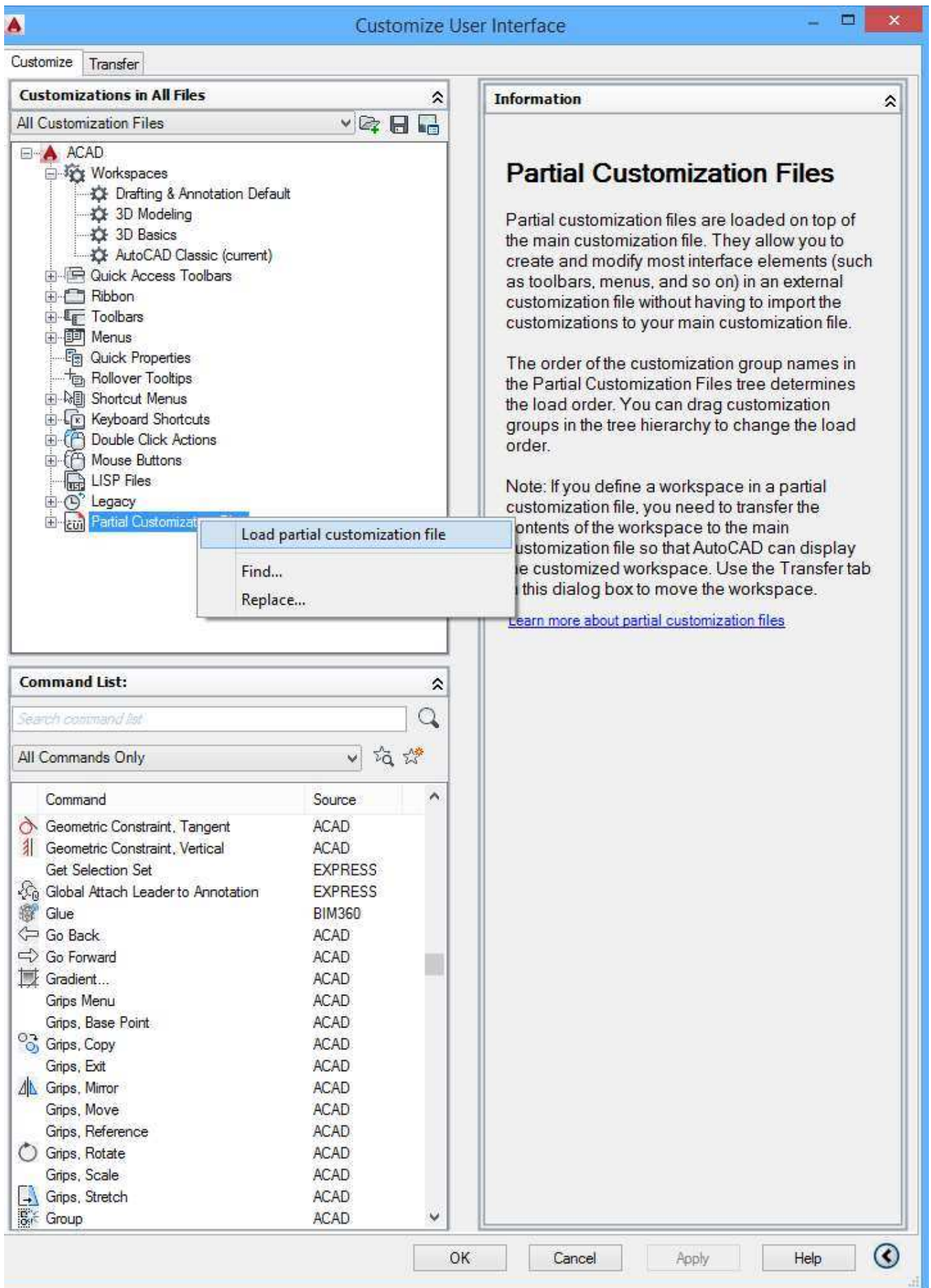




Select Tools->Customize->Intergace

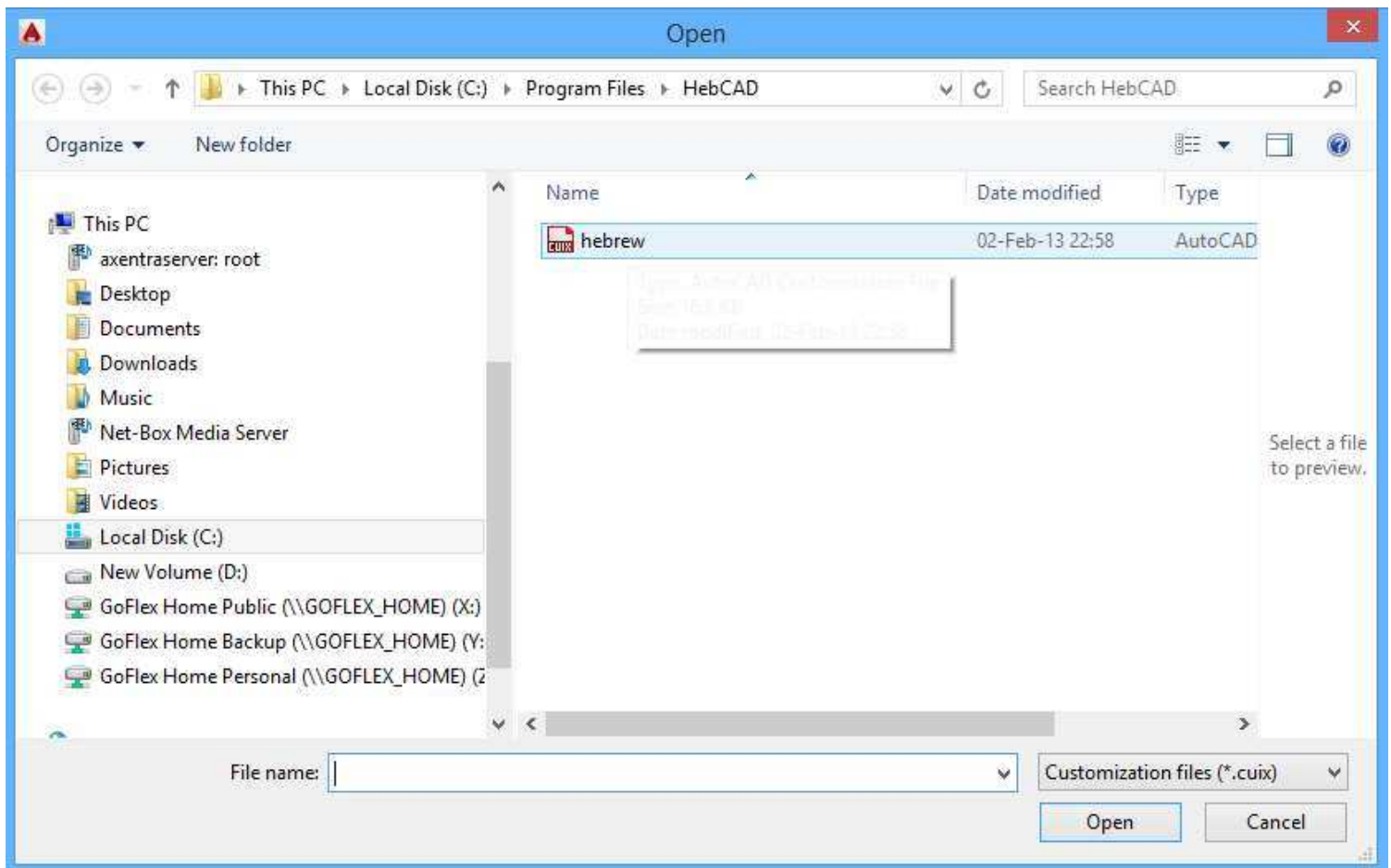


Right click "Partial"

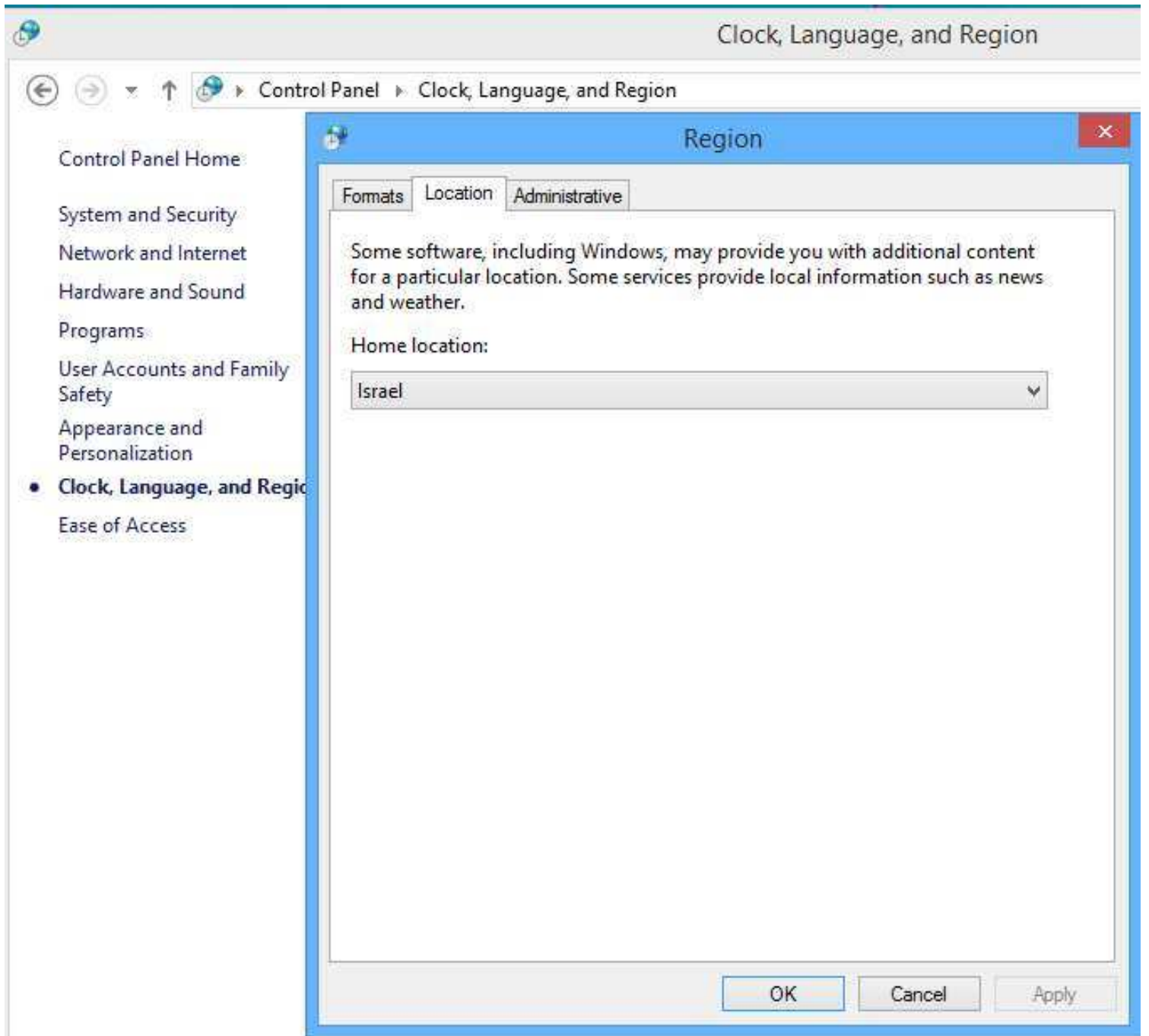


Load Parial Customization file - broese to Hebcad folder, select Hebrew.cuix



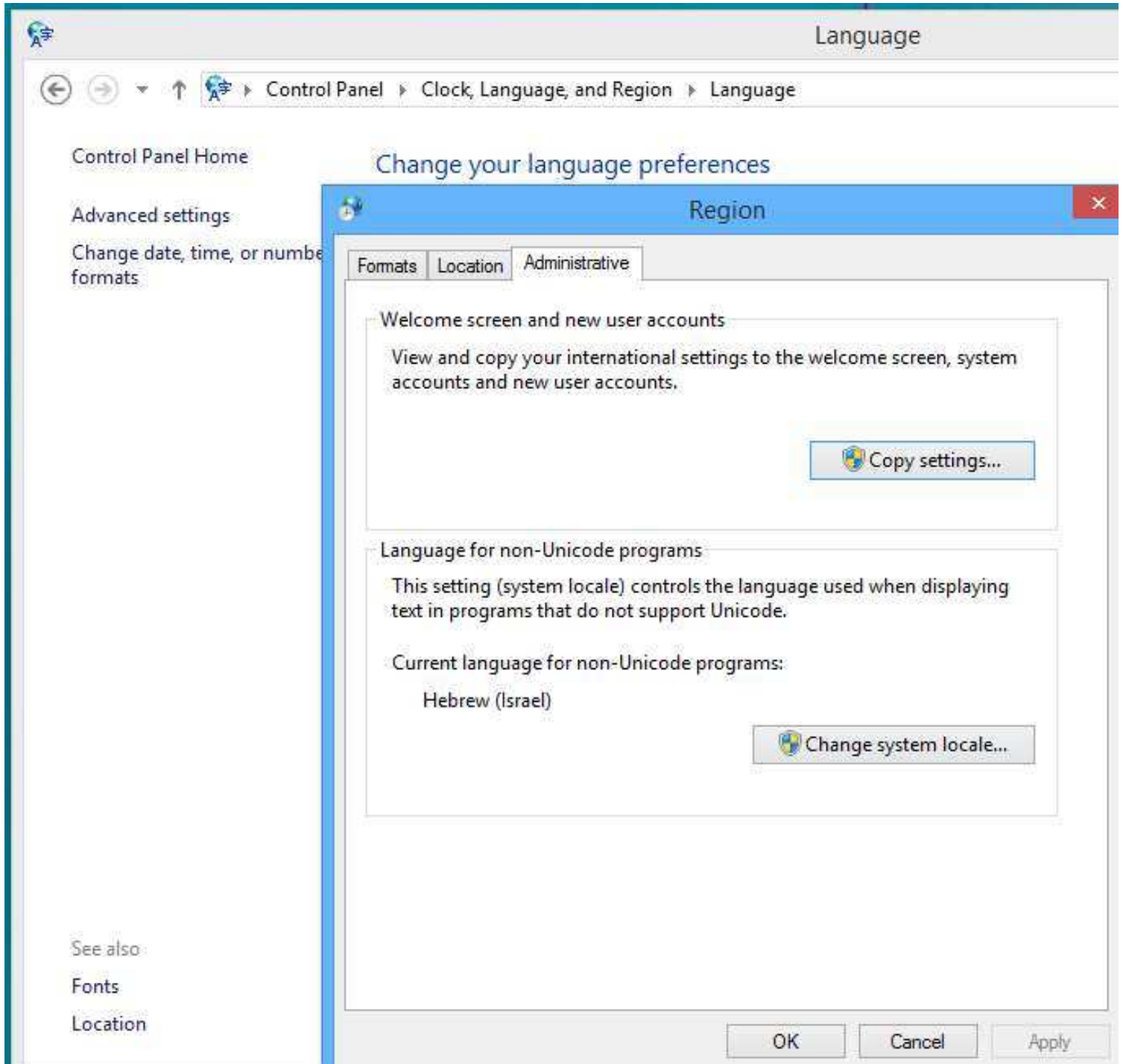


Browse to the Hebcad location



Control Panel Location settings





Control Paanel Language Region settings